

Sierra Wireless AirLink™ ACEnet Enterprise Grade Remote Management

Remote Device Management

This enterprise-grade device management tool, allows customers to monitor and manage their entire deployment of AirLink gateways and routers from a central location. Hosting on the customer server enables the customer to maintain data security.

SIMPLIFIED REMOTE ASSET MANAGEMENT

Managing remote assets presents several challenges for an organization. Many of these challenges can be eliminated by implementing a wireless asset monitoring solution leveraging the Sierra Wireless AirLink line of intelligent modems. During deployment and after implementation, it's vital to have efficient, real-time two-way communication with your devices. ACEnet enables you to efficiently deploy and monitor AirLink wireless routers and gateways on a large scale.

CONNECTING ANYTHING 2 ANYTHING

ACEnet allows you to efficiently deploy, monitor, and maintain machine-to-machine wireless networks of any size, by enabling you to quickly configure an entire group of AirLink routers and gateways to the same parameter settings. To ensure your M2M implementation is optimal, users can easily see when devices are out of contact and periodically poll each device for performance statistics.



KEY BENEFITS:

- Lower total cost of ownership
- Simple, inexpensive maintenance of devices
- Hassle-free monitoring of device health
- Customer hosted data
- Data security
- Easy access to historical data
- Consistent configuration of all devices

Poll device for real-time health status

Change configuration, Firmware and PRL on multiple devices simultaneously

Standard toolbars for simple navigation

Access performance statistics for all of your devices

Customize device status options

Identify devices by IP address or assign names for easy identification

The screenshot shows the ACEnet software interface with several windows open. The main window displays a list of devices with columns for Address, Modem Type, RSSI, Result, and Time. A 'Customize Columns' dialog box is open, allowing users to select available columns from a list. Another window shows a detailed view of a device's configuration and status. The interface includes standard toolbars for navigation and file operations.

Address	Modem Type	RSSI	Result	Time
166.139.18.177	Raven	-98	Success	12/13 11:06:54
166.139.18.170	Raven	-71	Success	12/13 11:07:22
166.139.18.120	Raven	-62	Success (7 of 7 changes applied)	12/13 11:10:50
166.139.18.120	Raven	-101	Success (7 of 7 changes applied)	12/13 11:10:57

Sierra Wireless AirLink™ ACEnet Enterprise Grade Remote Management

Technical Specifications

PRODUCT FEATURES

- One-to-Many Remote Management
- OTA Parameter Settings and Firmware Updates
- Real-Time Status Updates
- Polling of Devices and Custom Reports
- Programming Templates to Easily Configure Groups of Devices with Identical Parameters
- Customer Hosted Data
- Reporting and Charting

A COMPREHENSIVE SOLUTION

Adding ACEnet to a deployment of AirLink devices creates a complete asset monitoring solution, enabling real-time monitoring, control, maintenance and analysis of mission critical information.

ACEnet provides a means for customers to simplify deployment, configuration and device management.

With ACEnet you can:

- Remotely manage your entire deployment of devices in real-time
- Assign modem names for quick and easy location
- Poll devices and build custom reports for data that is important for your application
- Chart statistics for deeper performance analysis
- Update Firmware and PRL information to all of your devices at once
- Create and save templates for use for future deployments

ALEOS TECHNOLOGY

ALEOS, AirLink's embedded core technology simplifies installation, operation, and maintenance of any solution, and provides an always-on, always-aware intelligent connection for mission-critical applications.

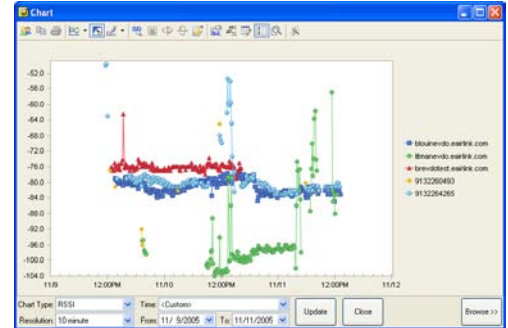


SUPPORT NETWORK

Sierra Wireless' continued industry leadership is based on a proven ability to make complex wireless data solutions work. This is accomplished with superior, high-quality products, exceptional tools and utilities and world-class technical support delivered by the Sierra Wireless responsive, highly-trained and experienced staff.

TECHNICAL REQUIREMENTS

- Windows XP
- Microsoft.net Framework



APPLICATIONS:

- Mobile Data + GPS Tracking
- Remote Monitoring + Control
- Enterprise Solutions
- Wireless Network Connectivity

FOR MORE INFORMATION PLEASE CONTACT:

TransCOR
Information Technologies

124 Jewett Street
Georgetown, MA 01833
1-888-RUGGED-3 • Fax: (978) 352-9199
www.TransCOR-IT.com
rugged@TransCOR-IT.com